

NORTH BAY ROWING CLUB WINE COUNTRY ROWING CLASSIC VII

Sunday, October 7, 2012

Welcome to the Wine Country Rowing Classic, a USRowing Registered Regatta. This is a 5,000-meter head race on the Petaluma River, one of the most enjoyable and beautiful lengths of protected water in California.

CONTENTS

| | |
|--|-----|
| <i>General Info, Medals, Schedule, Venue, Course Map</i> | 1-2 |
| <i>Registration, Entry Fees</i> | 3 |
| <i>Rowers Meeting, Waivers, Bow Numbers</i> | 4 |
| <i>Competitor Categories</i> | 4 |
| <i>Rules, Launch Protocol, Tides</i> | 4-5 |
| <i>Parking Map: Trailers, Car-toppers, Spectators</i> | 6 |
| <i>Watching the Regatta</i> | 7 |
| <i>Vendors and Sponsors</i> | 8 |

GENERAL INFORMATION

The regatta will take place at the Petaluma Marina at 765 Baywood Drive, Petaluma, CA 94954.

Entries are due at Regatta Central (www.regattacentral.com) by midnight Friday, September 28th. However, with an additional fee, late entries will be accepted through midnight Monday, October 1st.

For all Participants:

- 0600: Registration opens
- 0700: Coaches, Coxswains, and Scullers meeting
- 0730: Boat launching commences
- 0830: First race
- 1430: Approximate conclusion of races



MEDALS

First and second place medals will be awarded throughout the day. Crews must finish ahead of at least one boat to earn medals. Champion Team Award (overall points leader) will be presented at the conclusion of the regatta.

SCHEDULE

The final race schedule will be posted by Saturday, October 6, 2012 on www.regattacentral.com.

VENUE

The 5,000-meter course will be on the reach of the Petaluma River depicted below. Outstanding riverside viewing opportunities are available along the bike/pedestrian path in Shollenberger Park. This may be reached via an easy 10-minute bike ride or 30-minute walk along a path from Regatta HQ. Shollenberger Park docents will be on hand to direct viewers to pathways, helping us protect the entire area, a fabulous nature preserve.



REGISTRATION

Registration is online at: www.regattacentral.com Please contact support at Regatta Central at 614.360.2922 or support@regattacentral.com, or Jean Horrell at horrellj@sonic.net if unable to register electronically.

As a USRowing Registered Regatta, the WCRC requires all participating organizations to be active member organizations of USRowing. The only exceptions to this rule are single scullers who are either affiliated with an organization that is not an active member of USRowing, or are unaffiliated with any rowing organization. Such single scullers must be individual members of USRowing to race, but only as “unaffiliated.”

ENTRY FEES

| Registration | Received by | Boat Class | | | |
|--------------|----------------------------------|------------|---------|-------|-------|
| | | 1X | 2- / 2X | 4+/4X | 8+ |
| Regular | Midnight Friday Sept. 28th | \$25 | \$40 | \$50 | \$80 |
| Late | Midnight Monday Oct. 1st | \$40 | \$65 | \$80 | \$130 |

There will be no race day registration.

LINEUP CHANGES & SCRATCHES (Prior to Race Day): Lineup changes after the deadline can be made directly by coaches at www.regattacentral.com before midnight on Friday, October 5th. To scratch an entry, contact Jean Horrell at horrellj@sonic.net

RACE DAY LINEUP CHANGES: Indicate any changes on the “Crew Change Form” (which must be fully completed) at WCRC Registration **as soon as possible** on race day.

WAIVERS

All participants ***must*** have a signed waiver on file on race day. See www.regattacentral.com for instructions on submitting a USRowing waiver.

Missing waivers hold up registration on race day. Coaches, PLEASE be sure your athletes have signed their waivers.

COACHES, COXSWAINS, and SCULLERS MEETING

Coaches, coxswains, and scullers will attend a **mandatory meeting** in the registration area on race day at **7:00 a.m.** You will be advised about the traffic pattern, dangers along the river, County Sheriff's patrol boats, and other items vital to safety. A chart of the course will be on display at Regatta HQ, in the parking lot of the Sheraton near Registration.

All races will be 5,000 meters, single file. This is a relatively easy course with a few gentle turns. Please ensure that all coxswains on your team understand the Rules of Rowing.

Warm-up: Your warm-up will consist of a 5,300 meter row to the starting line plus the holding area immediately downstream of the start.

COMPETITOR CATEGORIES/DEFINITIONS

MASTERS: The event will use USRA age groups (AA:21-26, A:27-35, B:36-42, C:43-49, D:50-54, E:55-59, F:60-64, G:65-69, H:70-74, I:74-79, J:80+). **Ages are as of December 31.** Age groups may be combined based on the entries received. All Masters races in combined age groups will be handicapped. In team boats, the average age of the rowers (excluding cox), rounded down, will determine the age group and handicap.

HIGH SCHOOL: Exclusively for Junior athletes

COLLEGIATE: Exclusively for collegiate athletes

OPEN: For elite Junior and Master rowers. No age restriction; no handicaps applied.

Women's Open/Collegiate: NCAA rules apply. Collegiate women's entries will not be accepted for events not listed as "collegiate". (Excerpted from NCAA Bylaw 13.11.1.2.)

MIXED: One half (or more) women rowers.

NOVICE: Any rower (sweep or scull) whose first race was no earlier than two years prior to October 7, 2012.

LIGHTWEIGHTS:

| | |
|-------|----------------|
| Men | 160 lb Maximum |
| Women | 130 lb Maximum |

COXSWAINS: May be any gender, age, or weight.

BOW NUMBERS

Bow number placards, specially made by NBRC with every number used in the regatta, will be loaned to participants when they check in at Registration. Crews are encouraged to apply vinyl tape to help secure the card to their bow clip.

Bow numbers will be collected by a volunteer upon your return to the dock following your race.

RULES

This is a USRowing Registered Regatta. All USRowing safety protocols will be observed. Bow balls and heel tie-downs or quick-release shoes are required and will be checked by the dock volunteers.

All craft shall remain on the westerly side of the river while traveling to the start, and easterly side while racing. **THIS IS AN ABSOLUTE REQUIREMENT FOR YOUR SAFETY. PAY PARTICULAR ATTENTION TO STAYING ON YOUR SIDE THROUGH TURNS IN THE RIVER.**

Racing crews have the right of way over all other boats. Boats warming up or returning from the finish must yield to oncoming crews and remain clear of the race course.

Overtaking crews have the right of way over slower boats. Boats being overtaken must yield to the outside of a turn or otherwise follow the instructions of the overtaking boat.

Leave all buoys marking the center of the waterway to port. No cutting corners.

Crews must use sportsman-like conduct and language.

The rules are meant for safety. Violations will result in a 30-second time penalty or disqualification at race official's discretion.

In case of any dispute, finishes will be determined by the Rules of Rowing.

LAUNCH PROTOCOL

Please listen carefully and follow the instructions of the Dock Master to ensure efficient use of the docks (one long, one short). Unless instructed otherwise by the Dock Master, each crew shall land on the same dock from which it launched.

TIDES and LAUNCH TIME:

The Petaluma River is a tidal estuary. Tides at the Finish Line on October 7th:
Low: 2:01 am (0.6') **High:** 8:48 am (4.9) **Low:** 2:26 pm (2.7')

Most competitors, except for those in the earliest and latest races, will row with a moderately gentle outbound tide to the start. We recommend departing the launch dock approximately 45 minutes in advance of your start except for those in the earliest and latest races, for which 50 minutes should suffice.

PETALUMA MARINA PARKING LOT/ BOAT RAMP

Saturday, Oct. 6th Arrivals: Those planning on arriving the evening before the race, please contact Colene Mace at 707-529-2226, colenemace@aol.com to arrange your arrival at the Petaluma Marina Parking Lot and be directed to your spot.

Race Day Trailer Drivers: Trailers will park in the main lot and on the west side of the triangular parking lot.

Car Toppers will park on the east side of the triangular parking lot.

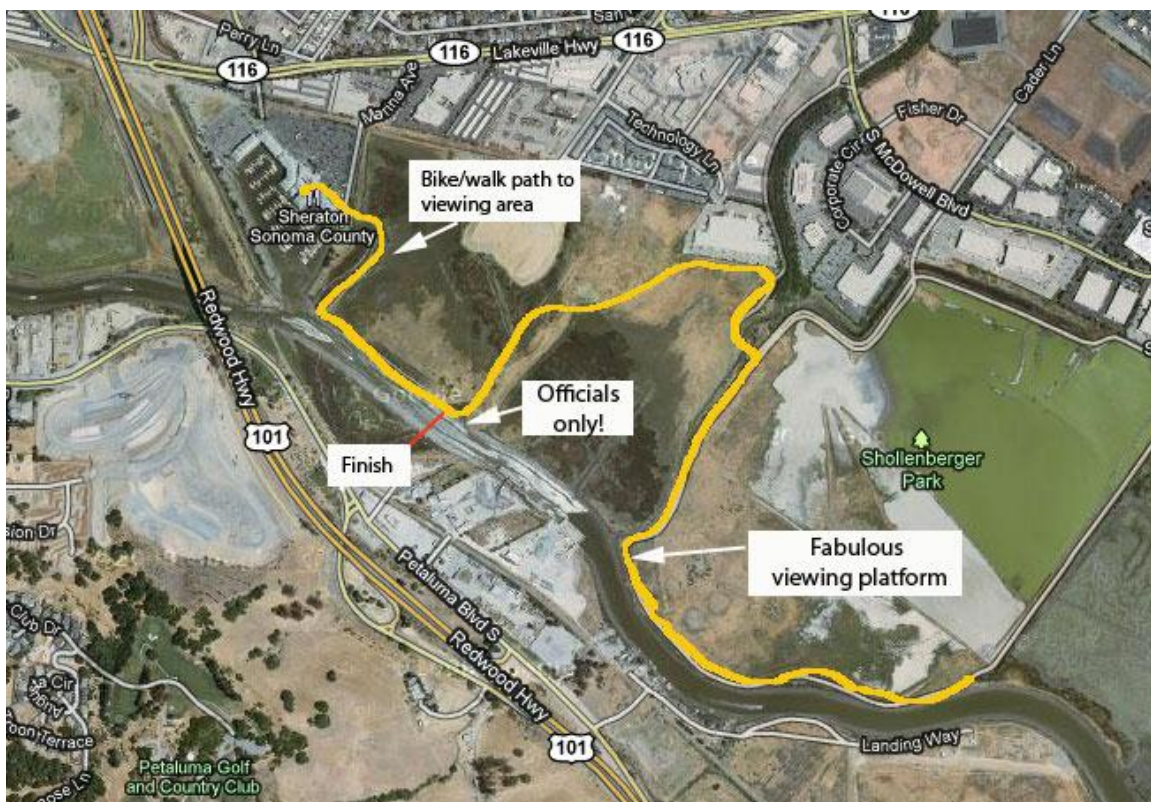
Spectator Parking: Spectators will be directed to the **left**, (farthest east side) parking area with their vehicles.

A public boat ramp and a gas dock are located adjacent to the temporary launch and recovery docks we'll be using. We must ensure clear access to the boat ramp and gas dock at all times.



WATCHING THE REGATTA

Outstanding riverside viewing opportunities are available along the bike/pedestrian path in Shollenberger Park. This may be reached via an easy 10-minute bike ride or 30-minute walk along a path from Regatta HQ. **To protect the marsh, please remain on paths at all times!** You may also drive the 1.2 miles from the marina parking lot to the entrance of Shollenberger Park and walk from there. From the marina parking lot turn right onto Lakeville Highway, and then turn right at S. McDowell Blvd. At the intersection of Cader Lane, turn right through the park gates to the parking lot. The sign for the park is very small; be alert.



Shollenberger Park (and its neighboring preserved areas along the river) is visited by hundreds of pedestrians daily who are attracted by the views and abundant bird life. This marks the upstream end of the largest relatively intact ancient salt marsh in California. Information about flora, fauna, and directions is available at: <http://www.petalumawetlands.org/HTML/directions.html>

VENDORS and SPONSORS

- **Free water** will be available to refill water bottles at Registration area.
- **Marina Bean:** Coffee, tea, bagels and assorted breakfast items in cafe starting at 5:30 a.m.
- **Taqueria Santa Cruz:** Mexican Food, drinks, snacks.
10:00 a.m. – 3:00 p.m.
- **Clif Bar:** Complimentary samples of your favorite Clif Bar products.
- **JL Racing:** Large selection of rowing apparel and accessories.
- **Janet Sedacca:** Returns with handcrafted jewelry featuring tiny antique beads, high quality stones and pearls and antique ROWING and other SPORTS and CULTURAL medals from around the world.
- **Fine Designs, Inc.:** T-shirts imprinted with their full line of logos, commemorating the 2012 Wine Country Rowing Classic.
- **Peter Leabo, Photographer** <http://www.leabogallery.com> Peter was a professional news/sports photographer for 20 years, including 15 years with AP, covering major news and sporting events around the world.